

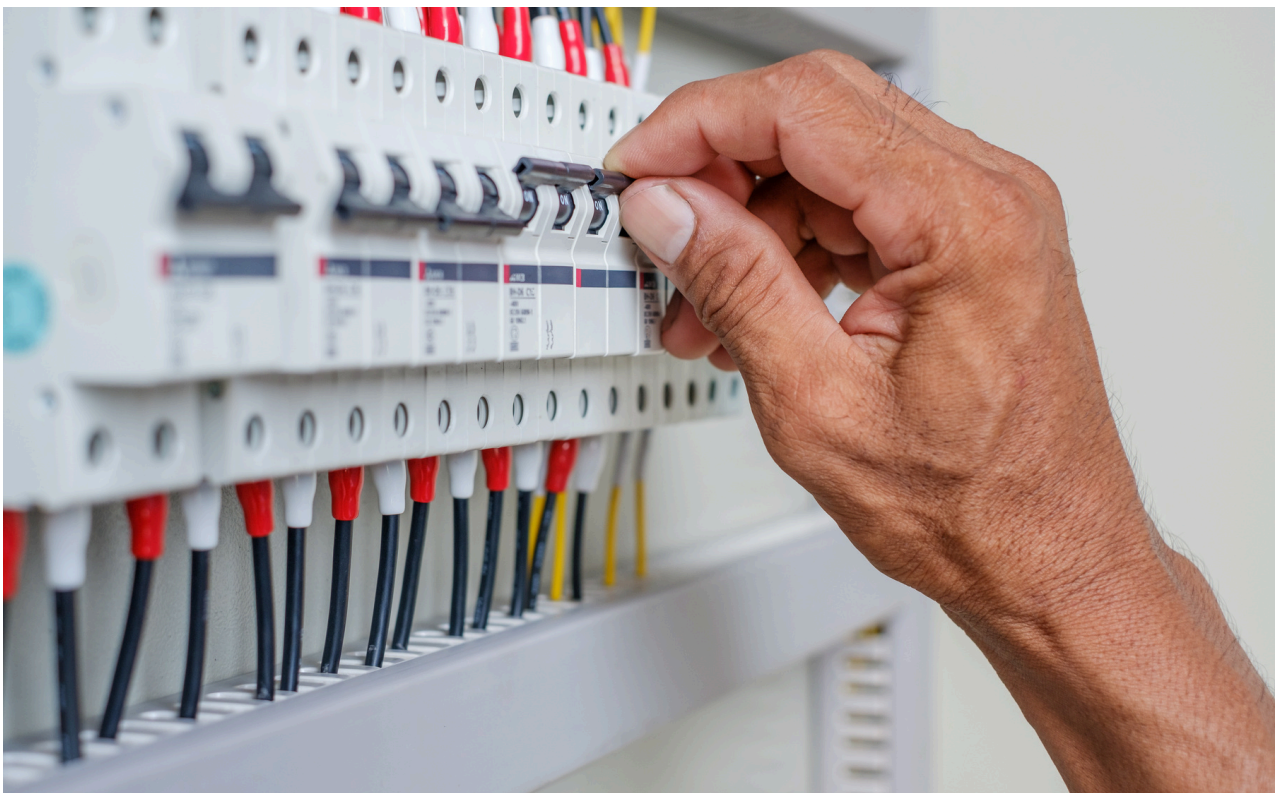
LOSS OF POWER

Firstly, check the circuit breaker in the power switch board to see if an appliance has tripped the safety switch. If so, reset the main power switch on the power board.

Systematically check to see if a faulty appliance is causing the power to trip by doing a process of elimination (particularly a kettle, iron etc.) In the hotter weather – check to ensure you are not running too many appliances at the one time, causing the power circuit to trip.

Check with your neighbours to see if they are experiencing the same issue as you.

Check Western Power website <https://www.westernpower.com.au> or call 13 13 51 to make sure there is not a power outage in your area.



In the event that all of the above has been checked, you will need an electrician to attend the premises.