

View Moving & Delivery Instructions

Book the lift by filling out the form
in the residents section of
www.tribepropertyco.com.au
as soon as you know your move in/out date.
Moves on Weekends or Public Holidays are not permitted.

- Either on the day of or the day before your move - please call into the Vantage office to collect lift instructions and the lift key. There is a refundable **\$200 cash** deposit to collect the key.
- Your fob will open the back service roller door. You will receive instructions when you pick up the key on locking this open.
- Protective lift covers are required to be installed by your removalist prior to commencing your move. Instructions on where to collect these will be given to you when you collect the lift key.
- The removal van should be parked nose-in, in the truck parking bay on the southern side of View.
- When removalists or delivery are finished please ensure Basement door is closed and the lift covers removed and the lift returned to normal operation.
- Please return the lift key to the office to collect your deposit refund.

Truck Parking
nose into this parking space

Lift measurements

Door height 210cm
Door Width 90cm
Lift width 140cm
Length 190cm
Height 235cm



View

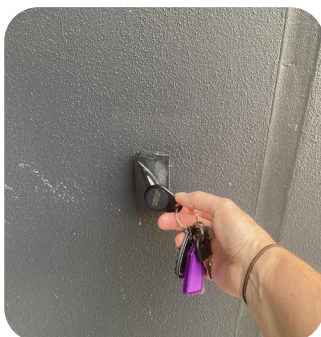
Lift Operating Instructions for Moves & Deliveries

Lift Covers

On the day of your move the lift covers will be left in a trolley outside the View bin room in the B1 basement carpark. After you have finished with the covers, please take them down and return to the same place. Please pad the lift closest to the entry of the lift foyer (far right when standing looking at them)

Opening the Basement roller door

Your fob will open the basement roller door. Once the door is open please pull the **RED toggle** down to lock it open. When you have finished your move please pull the **GREEN toggle** down and then swipe your fob to put the door back into service



Swipe your fob to open the roller door



Once the door has opened pull the **RED** toggle down to keep the roller door open



When you have finished pull the **GREEN** toggle down and swipe your fob again to place the door back in service

Instructions for Using the Lift in Removalist Mode

Activating Removalist Mode

To place the lift into Removalist Mode, begin by using the lift key to open the panel located beneath the lift buttons inside the elevator. Locate the switch at the top right, labelled 'IND', and move it to the '—' position. You will know Removalist Mode is active when the floor display above the buttons changes to show 'PRIORITY'.

Manual Operation in Removalist Mode

Once the lift is in Removalist Mode, it must be operated manually. You will not need a fob to use the lift during this time. After loading your furniture into the lift, press the button for your desired floor. While inside, hold down the close door button until the lift begins to move. On arrival at your selected floor, the lift doors will open and remain open until you press 'B1' and again hold the close door button to start the return journey.

Signage During Use

While using the lift in Removalist Mode, ensure that you take the 'lift in use' sign with you. Place the sign outside the lift at both 'B1' and your floor while the lift is in operation to notify others.

Returning the Lift to Normal Service

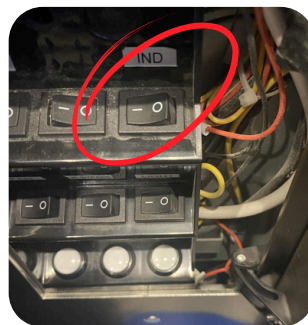
After you have finished using the lift, please return it to normal service mode. Open the panel once more and press the top right switch back to the 'o' position.

Important Guidelines and Reminders

- Only transport furniture and large items in the padded lift. Do not use any other lifts for moving goods while the removalist lift is in use, as this may cause long delays for other residents.
- If any damage occurs to the walls, doors, or property during your move, report it promptly to the caretaker.
- Take note of the lift's dimensions and avoid forcing oversized items into the lift, as this is likely to cause damage.



Use the lift key to open the switch panel



Flip the far right switch to the left position



You should now be in priority mode

When you have finished please return the lift to normal service