

June 2026



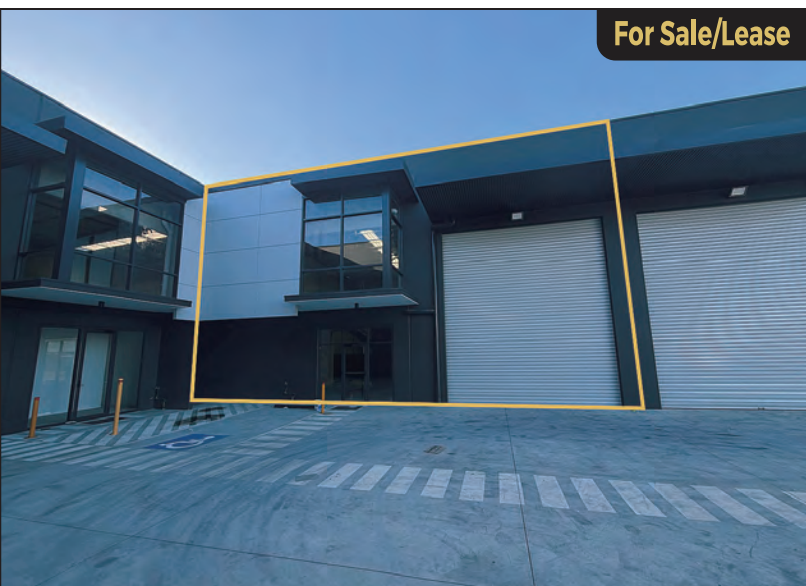
## South Windsor

### Large Freestanding Warehouse

- 2,142sqm (approx) of building
- 4,050sqm (approx) total land area
- Extra 207sqm (approx) sheltered rear yard space
- High 3 phase power available (buzz bar)
- 4 x automatic roller doors
- Ducted air conditioned office space
- High internal clearance
- 3x undercover car parking spaces

**For Sale**  
\$8,250,000 Exc GST

**Mitch Reardon** 0401 313 160  
www.infocus.sydney/5099030



## South Windsor

### Brand New Factory

- 316sqm (approx)
- First floor mezzanine
- 7m-8m (approx) internal clearance
- 3 phase power available

**For Sale**  
\$1,422,000 Exc GST  
**For Lease**  
\$56,880 PA Net Exc GST

**Mitch Reardon** 0401 313 160  
www.infocus.sydney/5082040



## Penrith

### 645sqm (approx) on Batt Street

- Bonus mezzanine area
- Ground floor showroom
- First floor office
- Allocated car parking spaces
- Zoned E4 General Industrial

**For Lease**  
\$130,000 PA Net Exc GST

**Mitch Reardon** 0401 313 160  
www.infocus.sydney/5100379

[www.infocus.sydney](http://www.infocus.sydney)

### InFocus Commercial Real Estate

a: 16 Lawson Street, Penrith NSW 2750 | p: (02) 4731 3399 | f: (02) 4731 5222  
e: penrith@infocus.sydney | w: www.infocus.sydney



**For Lease**

## Emu Plains

### 950sqm (approx) - 2 Units

- Ample onsite parking
- Roller door access
- 2x toilets
- Kitchen
- Zoned E4 general industrial

**For Lease**  
\$142,500 PA Net Exc GST

**Paul Harvey** 0413 502 014  
www.infocus.sydney/5080235



**For Lease**

## Penrith

### Modern Factory Unit

- 250sqm (approx)
- High clearance, clearspan factory
- 40sqm (approx) mezzanine
- 4 car parking spaces

**For Lease**  
\$57,500 PA Net Exc GST

**Paul Harvey** 0413 502 014  
www.infocus.sydney/5097090



**For Lease**

## Penrith

### 194sqm (approx) Factory/Warehouse

- Glazed frontage
- 3 phase power available
- 2 allocated car parking spots
- Complex with great truck access

**For Lease**  
\$36,900 PA Gross Exc GST

**Diego Menendez** 0499 333 111  
www.infocus.sydney/5099314



**For Lease**

## Mulgrave

### Street Front Unit

- 276sqm (approx)
- 8m (approx) internal clearance
- Secure gated complex of 8 units
- Air conditioned office
- 15 month lease available

**For Lease**  
\$6,270 Per Month Inc GST

**Mitch Reardon** 0401 313 160  
www.infocus.sydney/5089693



**For Lease**

## North Richmond

### 301sqm (approx) Factory Unit

- Automatic roller door
- Yard area
- Wash bay
- 3 phase power available
- Zoned E4 General Industrial.

**For Lease**  
\$63,000 PA Net Exc GST

**Mitch Reardon** 0401 303 160  
www.infocus.sydney/5089009



**For Lease**

## Penrith

### Freestanding Unit with Yard

- 300sqm (approx) unit
- 2,023sqm (approx) land
- Level hardstand yard (road base surface)
- 3 phase power available

**For Lease**  
\$122,096 PA Net Exc GST

**Mitch Reardon** 0401 313 160  
www.infocus.sydney/5091068



**For Lease**

## St Marys

### Rare 350sqm (approx) Factory & Yard

- Zoned E4 General Industrial
- Roller door access
- Crane and jibs (uncertified)
- 3 phase power available
- Amenities and lunchroom

**For Lease**  
\$70,000 PA Gross Exc GST

**Paul Harvey** 0413 502 014  
www.infocus.sydney/4836809



**For Lease**

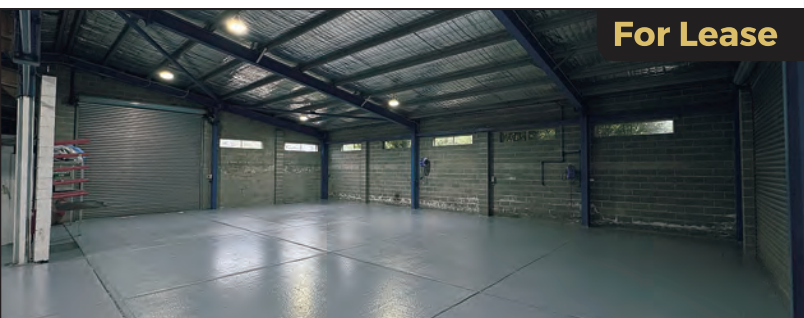
## Minchinbury

### Street Front Factory Unit

- 185sqm (approx)
- Automatic roller door
- 6m (approx) internal warehouse clearance
- 2 allocated car parking spaces

**For Lease**  
\$47,000 PA Gross Exc GST

**Mitch Reardon** 0401 313 160  
www.infocus.sydney/5092151



**For Lease**

## North Richmond

### Corner Block Factory Unit

- 417sqm (approx)
- 7x car parking spaces
- 3 phase power available
- Paint mixing room & spray booth available

**For Lease**  
\$73,000 PA Net Exc GST

**Mitch Reardon** 0401 313 160  
www.infocus.sydney/5088962



**For Lease**

## Emu Plains

### 183sqm (approx) Factory Unit

- Additional 70sqm (approx) mezzanine
- Office with air-conditioning
- 3 phase power available
- Partitioned workspaces

**For Lease**  
\$39,900 PA Net Exc GST

**Paul Harvey** 0413 502 014  
www.infocus.sydney/5070180



**For Sale**

## Penrith

### Freestanding Factory

- 981sqm (approx) of building
- 1,780sqm (approx) total land area
- Bonus mezzanine & office areas
- Rear yard & parking areas
- Offered with vacant possession

**For Sale**  
\$5,500,000 Exc GST

**Mitch Reardon** 0401 313 160  
**Dave Reardon** 0412 732 432  
www.infocus.sydney/5110833



**For Lease**

## North Richmond

### Spray Booth & Paint Mixing Room Included

- 712sqm (approx) of building
- 3 phase power available
- Wash bay with separator
- 2,023sqm (approx) total land area

**For Lease**  
Please Contact Agent

**Mitch Reardon** 0401 313 160  
www.infocus.sydney/4763191

[www.infocus.sydney](http://www.infocus.sydney)



**For Lease**

## Minchinbury

### 325sqm (approx) Unit

- 246sqm (approx) warehouse
- 79sqm (approx) office and amenities
- 3 allocated car parking spaces
- 3 phase power available

**For Lease**  
\$78,000 PA Gross Exc GST

**Mitch Reardon** 0401 313 160  
[www.infocus.sydney/5092103](http://www.infocus.sydney/5092103)



**For Lease**

## Penrith

### 300sqm (approx) Factory/Showroom

- Street front unit
- 7.5m warehouse clearance
- 3 phase power available
- Solar panels available
- 3 allocated car parking spaces

**For Lease**  
\$55,000 PA Net Exc GST

**Mitch Reardon** 0401 313 160  
[www.infocus.sydney/4894013](http://www.infocus.sydney/4894013)



**For Lease**

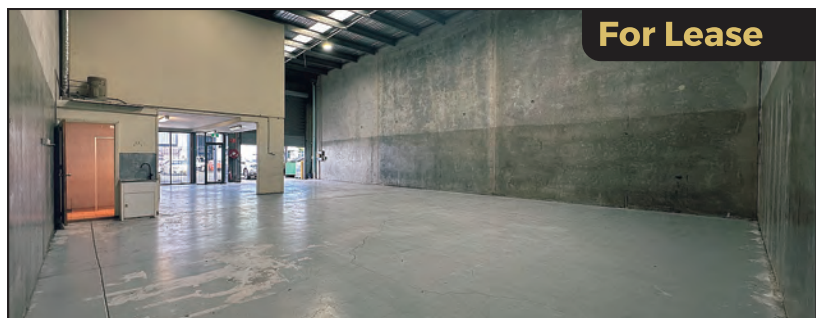
## St Marys

### 160sqm (approx) Factory Unit

- 3 phase power available
- Amenities with kitchenette
- Roller door access
- 2 car parking spaces
- Zoned E4 General Industrial

**For Lease**  
\$35,000 PA Gross Exc GST

**Diego Menendez** 0499 333 111  
[www.infocus.sydney/5064492](http://www.infocus.sydney/5064492)



**For Lease**

## Arndell Park

### 272sqm (approx) Industrial Unit

- 235sqm (approx) warehouse
- 37sqm (approx) office mezzanine
- High clearance
- 3 phase power available

**For Lease**  
\$53,040 PA Net Exc GST

**Diego Menendez** 0499 333 111  
[www.infocus.sydney/5047756](http://www.infocus.sydney/5047756)



**For Sale**

## Penrith

### 200sqm (approx) Factory Unit

- DA approved & fitted out "meat cutting facility"
- Grease trap
- Complete cool room set up
- 80sqm (approx) office

**For Sale**  
\$950,000 Exc GST

**Diego Menendez** 0499 333 111  
**Paul Harvey** 0413 502 014  
[www.infocus.sydney/4711788](http://www.infocus.sydney/4711788)



**For Sale**

## Silverdale

### 2 x Brand New Factories

- 821.28sqm (approx) & 932.73sqm (approx)
- 7m (approx) internal clearance
- Dual disabled amenities
- Zoned E4 General Industrial

**For Sale**  
Expressions of Interest

**Paul Harvey** 0413 502 014  
[www.infocus.sydney/4432673](http://www.infocus.sydney/4432673)

[www.infocus.sydney](http://www.infocus.sydney)



**For Lease**

## Penrith

### High Exposure Factory Unit

- 304sqm (approx) unit
- 5m to 6m (approx) internal clearance
- NBN & 3 phase power available
- 5 allocated car parking spaces

**For Lease**  
\$49,000 PA Net Exc GST

**Mitch Reardon** 0401 313 160  
www.infocus.sydney/4827791



**For Sale**

## Windsor

### Vacant Possession Yard

- 7,423sqm (approx)
- 275sqm (approx) shed & a bonus 93sqm (approx) mezzanine
- Compacted road base, concrete & bitumen surface yard

**For Sale**  
\$3,700,000 Exc GST

**Mitch Reardon** 0401 313 160  
www.infocus.sydney/4947595



**For Lease**

## Glendenning

### 1,800sqm (approx) Yard

- Fenced & gated
- Shared access divided with concrete barriers
- Short term lease available
- Located just off the M7

**For Lease**  
\$110,000 PA Gross Exc GST

**Paul Harvey** 0413 502 014  
www.infocus.sydney/4756383



**For Sale/Lease**

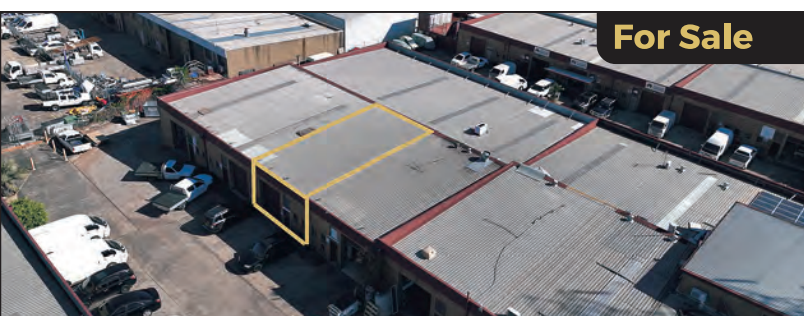
## St Marys

### One of a Kind Corner Site!

- 2,004sqm (approx) lot size
- DA Approved drive through fast food
- 160sqm (approx) office/workshop
- Zoned E4 General Industrial

**For Sale**  
Please Contact Agent  
**For Lease**  
Please Contact Agent

**Paul Harvey** 0413 502 014  
www.infocus.sydney/4947525



**For Sale**

## St Marys

### 116sqm (approx) Unit

- Additional storage mezzanine
- 3 phase power available
- 2x allocated car parking spaces
- Internal clearance 3.8metre (approx)

**For Sale**  
Please Contact Agent

**Diego Menendez** 0499 333 111  
www.infocus.sydney/5089940



**For Sale**

## Penrith

### 40sqm (approx) Storage Unit

- 24/7 access
- CCTV security throughout
- Current passing rent: \$10,000 PA Gross Exc GST
- Lease expiry 20 November 2026

**For Sale**  
\$190,000 (Going Concern)

**Diego Menendez** 0499 333 111  
www.infocus.sydney/4270435



**For Sale**

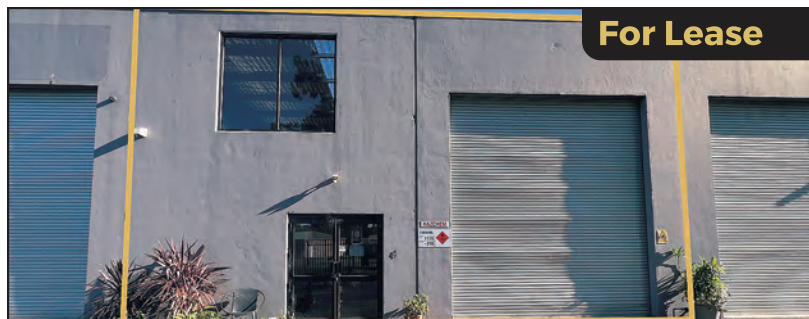
## Penrith

### 437sqm (approx) Industrial Unit

- 6 allocated car parking spaces
- 3 phase power available
- Air conditioned office spaces
- Amenities
- Kitchenette/lunchroom

**For Sale**  
Please Contact Agent

**Mitch Reardon** 0401 313 160  
[www.infocus.sydney/4925846](http://www.infocus.sydney/4925846)



**For Lease**

## North Richmond

### 210sqm (approx) Factory Unit

- Solar panels on the roof
- High clearance
- 4 car parking spaces
- LED lighting & natural light
- Security fencing & electrical gate

**For Lease**  
\$41,000 PA Net Exc GST

**Mitch Reardon** 0401 313 160  
**Dave Reardon** 0412 732 432  
[www.infocus.sydney/3592906](http://www.infocus.sydney/3592906)



**For Lease**

## Emu Plains

### Secure Yard

- 2,027sqm (approx)
- Zoned E4 General Industrial
- Power available
- Compacted road base
- Level yard

**For Lease**  
Please Contact Agent

**Mitch Reardon** 0401 313 160  
[www.infocus.sydney/4779014](http://www.infocus.sydney/4779014)



**For Lease**

## Penrith

### Retail Space in CBD

- 114sqm (approx) ground floor
- Great signage opportunities
- Amenities with a small kitchenette
- Zoned MUI Mixed Use

**For Lease**  
Please Contact Agent

**Diego Menendez** 0499 333 111  
[www.infocus.sydney/4841809](http://www.infocus.sydney/4841809)



**For Lease**

## St Marys

### 180sqm (approx) Office Space

- Air conditioning
- Amenities
- Open plan office area
- Ground floor reception area
- Kitchenette

**For Lease**  
\$36,000 PA Gross Exc GST

**Diego Menendez** 0499 333 111  
[www.infocus.sydney/4790211](http://www.infocus.sydney/4790211)



**For Lease**

## Penrith

### Office Sub-Lease

- 141sqm (approx) office
- 3 allocated car parking spaces
- Separate & secure access
- Kitchen/lunchroom
- Zoned E4 General Industrial

**For Lease**  
\$22,000 PA Gross Exc GST

**Mitch Reardon** 0401 313 160  
[www.infocus.sydney/4991818](http://www.infocus.sydney/4991818)

[www.infocus.sydney](http://www.infocus.sydney)



**For Lease**

## Cranebrook

### Commercial Cottage/Restaurant

- 290sqm (approx)
- Main road exposure
- Indoor and outdoor seating
- Commercial kitchen
- Grease trap

**For Lease**  
\$78,000 PA Net Exc GST

**Diego Menendez** 0499 333 111  
www.infocus.sydney/5081963



**For Lease**

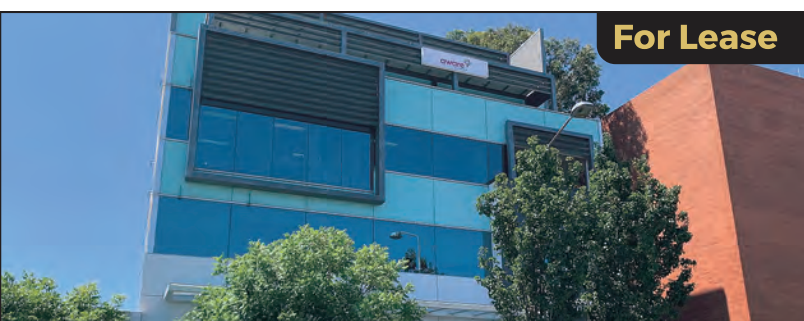
## St Marys

### Office with Courtyard

- 217sqm (approx) office area
- Additional 250sqm (approx) courtyard
- Male & female amenities
- Rear access to council car park

**For Lease**  
\$65,000 PA Gross Exc GST

**Diego Menendez** 0499 333 111  
www.infocus.sydney/5072684



**For Lease**

## Penrith

### Premium Office Space

- 320sqm (approx) floor area
- Partitioned offices & work areas
- Disabled access to the building
- Amenities & Kitchenette

**For Lease**  
Please Contact Agent

**Diego Menendez** 0499 333 111  
www.infocus.sydney/4781395



**For Lease**

## Rooty Hill

### Modern Medical Cottage

- Recently renovated
- 120sqm (approx) building
- 999sqm (approx) land
- 10 car parking spaces
- Full disability access

**For Lease**  
\$72,000 PA Net Exc GST

**Diego Menendez** 0499 333 111  
www.infocus.sydney/5050016



**For Lease**

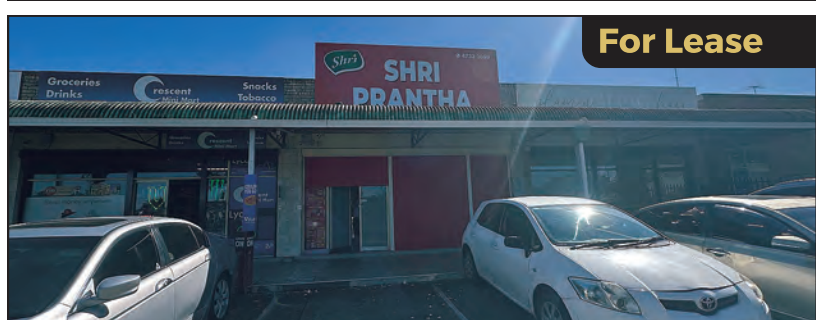
## St Marys

### Office Suite in CBD

- 260sqm (approx) on first floor
- Kitchenette
- Ample Council parking
- Air conditioned
- Fresh paint throughout

**For Lease**  
\$65,000 PA Gross Exc GST

**Diego Menendez** 0499 333 111  
www.infocus.sydney/4733595



**For Lease**

## Penrith

### Retail Shop/Restaurant

- 100sqm (approx)
- Commercial kitchen included
- Grease trap, cool room & exhaust fan
- Customer parking

**For Lease**  
\$55,000 PA Gross Exc GST

**Diego Menendez** 0499 333 111  
www.infocus.sydney/5068776

[www.infocus.sydney](http://www.infocus.sydney)



**LEASED**

**South Windsor**

- 900sqm (approx) building
- 1,860sqm (approx) site area



**LEASED**

**Penrith**

- 1,066sqm (approx) building
- 2,100sqm (approx) site



**LEASED**

**Penrith**

- 271sqm (approx) unit
- Secure gated complex



**LEASED**

**Emu Plains**

- 533sqm (approx) warehouse
- Large 3 phase power supply connected



**LEASED**

**St Marys**

- 155sqm (approx)
- First floor office suite



**LEASED**

**St Marys**

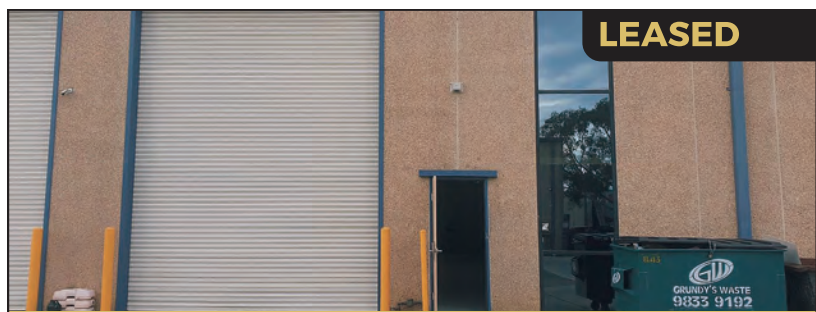
- 350sqm (approx) factory
- 195sqm (approx) yard



**LEASED**

**Penrith**

- 216sqm (approx) unit
- 3 phase power available



**LEASED**

**Minchinbury**

- 175sqm (approx) unit
- High clearance